



## Modular Preparation 2000 mm Passthrough Ambient Unit with Sliding Doors

ITEM # \_\_\_\_\_  
MODEL # \_\_\_\_\_  
NAME # \_\_\_\_\_  
SIS # \_\_\_\_\_  
AIA # \_\_\_\_\_



121929 (TE2S20DA)

Ambient Unit passthrough  
with 2+2 sliding doors,  
2000mm

### Short Form Specification

#### Item No. \_\_\_\_\_

Constructed entirely in 304 AISI stainless steel. Front and rear longitudinal stainless steel c-channel reinforcement. Internal and external side panels with sound deadening reinforcements to strengthen structure. Sliding doors incorporate sound deadening internal panels. 150mm height-adjustable (0/+90mm) oversized feet (65x65mm) can be removed for masonry installation. 45° degree internal side corner junction system. 304 AISI middle shelf, with inner double fold to eliminate gaps between sides and back, height-adjustable in 3 positions with a stainless steel support to avoid twisting.

### Main Features

- Masonry installation possible by simply removing feet.
- Extremely easy to clean thanks to the smooth edges.

### Construction

- Front and rear lengthwise stainless steel c-channel reinforcement, 15/10 (16 gauges).
- Sound deadening reinforcements between internal and external side panels to strengthen structure.
- Mounted on 150 mm height adjustable (0/+90 mm) oversized (65x65 mm) feet.
- Internal sides supporting the structure to have 45° degrees internal side corners junction system.
- 30 mm high middle-shelf in AISI 304 stainless steel, height-adjustable in 3 positions, with inner double fold to eliminate gaps between sides and back.
- Doors made in 304 AISI stainless steel with Scotch-Brite finishing.
- Sliding doors, with sound deadening internal and external panels, run on the upper part on the s/s bearings and on the lower part on a hidden runner. Doors are easy to remove thus facilitating cleaning procedures.

APPROVAL: \_\_\_\_\_



Experience the Excellence  
[www.electroluxprofessional.com](http://www.electroluxprofessional.com)

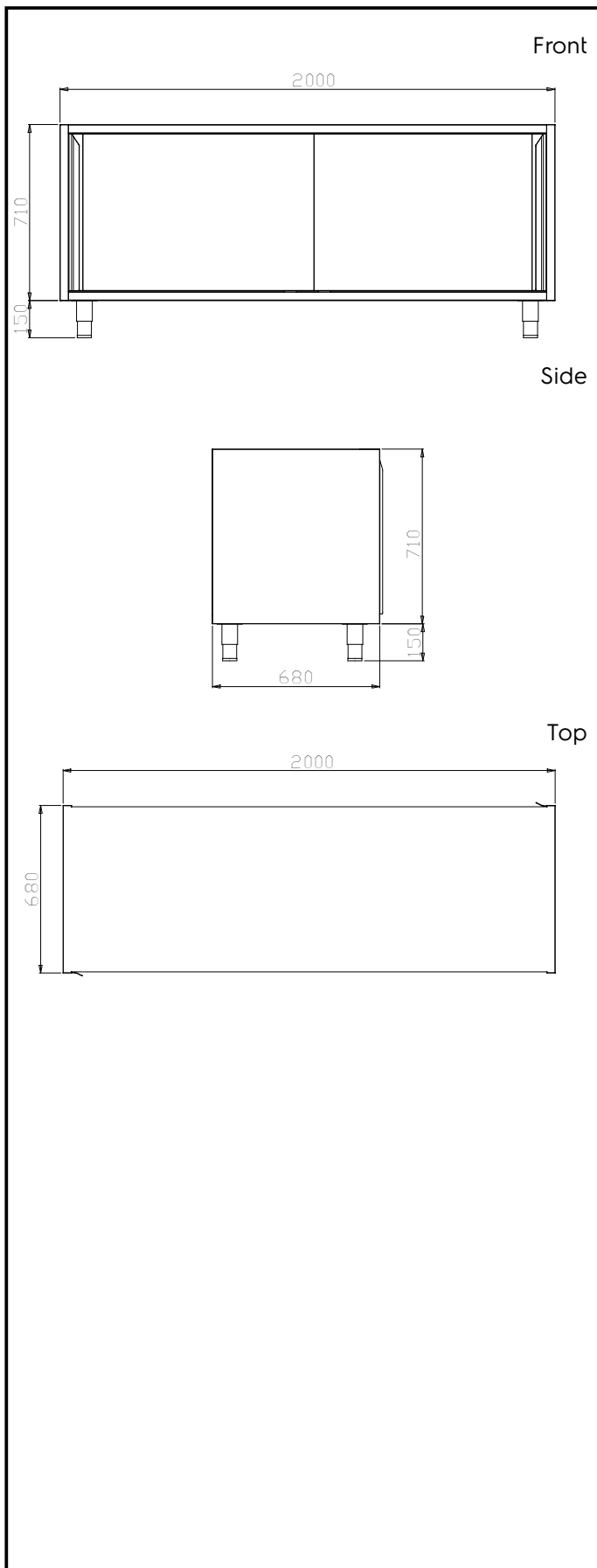


**Electrolux**  
PROFESSIONAL

## Modular Preparation 2000 mm Passthrough Ambient Unit with Sliding Doors

### Key Information:

Cabinet width:	
121929 (TE2S20DA)	1830 mm
Cabinet depth:	580 mm
Cabinet height:	645 mm
N° of doors:	4
Door Type:	Sliding
External dimensions, Width:	2000 mm
External dimensions, Depth:	680 mm
External dimensions, Height:	860 mm
Net weight:	138 kg



Modular Preparation  
2000 mm Passthrough Ambient Unit with Sliding Doors

The company reserves the right to make modifications to the products without prior notice. All information correct at time of printing.

2025.06.29